

## **Queensland 2018**

**Online Search**

**Farming Information**

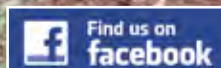
**Stud Breeders Guide**

**Classified Directory**

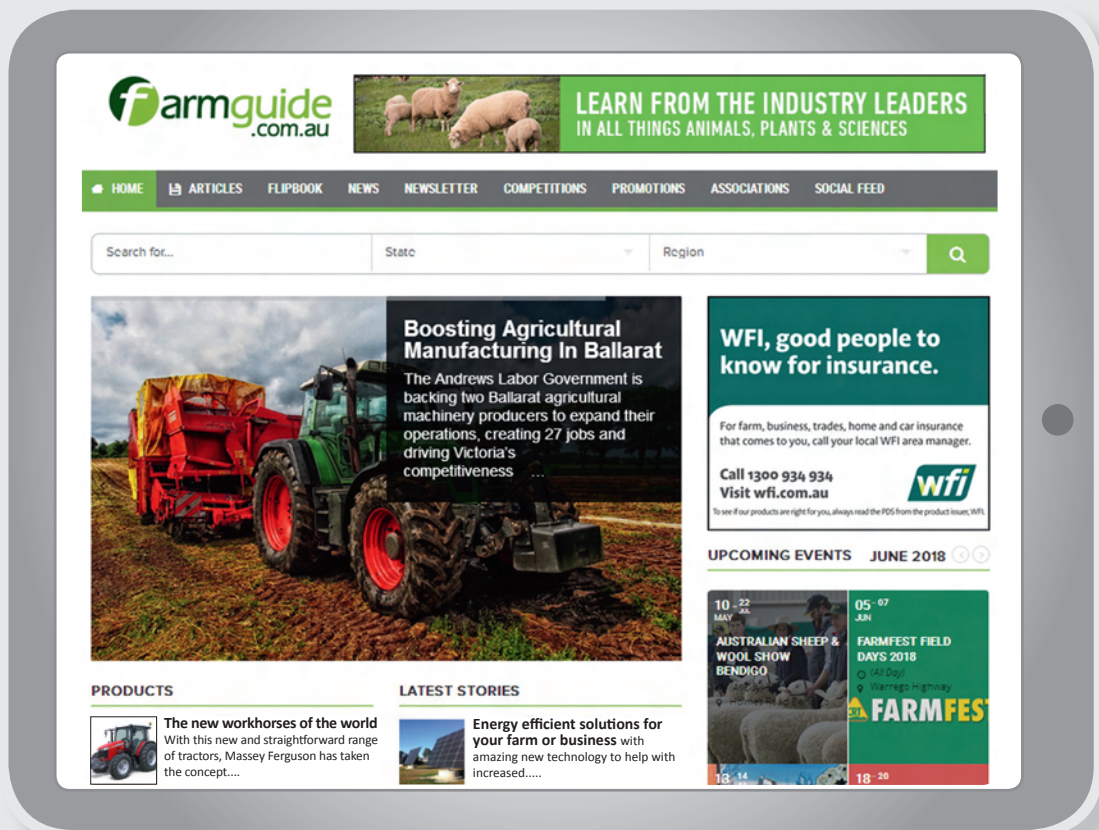
RRP: \$9.95\*



9 771448 110002



@FarmGuideAustralia



farmguide.com.au is now your online agricultural portal for all your farming information, news stories, sale dates, show and field days, farming advice and more.....

visit us at [www.farmguide.com.au](http://www.farmguide.com.au)



# Welcome to FarmGuide Queensland

**Postal Address**

PO Box 326 Black Rock VIC 3193

Phone: 03 9584 1666

Fax: 03 9584 1555

[www.farmguide.com.au](http://www.farmguide.com.au)

Dear Reader,

Welcome to the 17th Edition of the Queensland FarmGuide.

FarmGuide is an annual publication produced specifically to meet the needs of the farming community and is delivered by Australia Post to farmers and businesses related to farming each year.

FarmGuide is made up of three specific sections:-

**Information Pages** full of important reference material tailored specifically to meet the needs of farmers. Government departments use the guide as a way of disseminating information of the farming community. There are various articles on Farm Safety, Land and Water, Livestock, Health & Wellbeing and many more important issues.

**Stud Breeders Guide** is a comprehensive listing of breeders throughout Queensland. Breed associations provide comprehensive listings of their members from Alpacas, Cattle, Sheep to Working Dogs.

**Classified Directory** lists all businesses who want to do business with farmers. Whether you want a new Motorbike, Fencing materials, a new Pump or even a new car FarmGuide has it all.

FarmGuide has now launched its new online portal to make it even easier to find a range of businesses throughout Australia who want to sell their products or services to farmers. You can view the guide online or use the search facility to find a relevant business. Better still if you know who you are looking for just type in their name on the home page.

Please enjoy this issue of FarmGuide and ensure that you support the businesses who want to deal with you, the farmer.

FarmGuide Management.

**IMPORTANT LEGAL NOTICE**

The following notice contains important information for directory users and businesses with Complimentary Listings.

1. FarmGuide is published by FarmGuide Pty Ltd, and in these notices is referred to as FarmGuide.

2. Except as required by law, FarmGuide gives no express or implied warranties in relation to this Directory. FarmGuide takes great care in compiling this directory, but makes no guarantee that the material in this directory is free from errors or omissions. Business names, telephone numbers, addresses and other information in the directory may not be accurate, complete or up to date.

Should you find any errors or omissions, please contact our Customer Service Manager on 03 9584 1666

3. To the extent conditions or warranties implied by law cannot be excluded and where it is entitled to do so, FarmGuide limits its liability to the provision of a replacement directory or in the case of a business with a complimentary listing, a complimentary listing in the next edition of the directory. FarmGuide and its employees, agents and contractors will not be liable for any loss or damage (including consequential loss or damage) to any person, whether caused by negligence or otherwise, which may arise directly or indirectly in respect of any error, omission or misrepresentation in any material in this directory.

4. FarmGuide does not endorse the goods or services offered by any advertiser and makes no representation that any particular advertiser has the resources, experience, qualifications, skills to provide goods or services that may be required by users of this directory, or that may be implied by the heading under which they are listed. Before entering into any transaction with an advertiser, users of this directory should determine whether prices quoted are inclusive or exclusive of GST, delivery charges and other taxes, charges and expenses. FarmGuide does not represent that any particular advertiser is financially sound or trustworthy.

5. FarmGuide reserves the right to publish the material in this directory (including display advertisements and alphabetical listings) in whole or part and with necessary amendments, in any other directory product or service produced by FarmGuide, via any other media (including the internet).

6. Much of the editorial in this publication is submitted by government departments and commercial organisations as part of an advertising package. While every attempt is made to ensure accuracy, FarmGuide Pty Ltd accepts no responsibility for actions taken by our readers as a consequence.

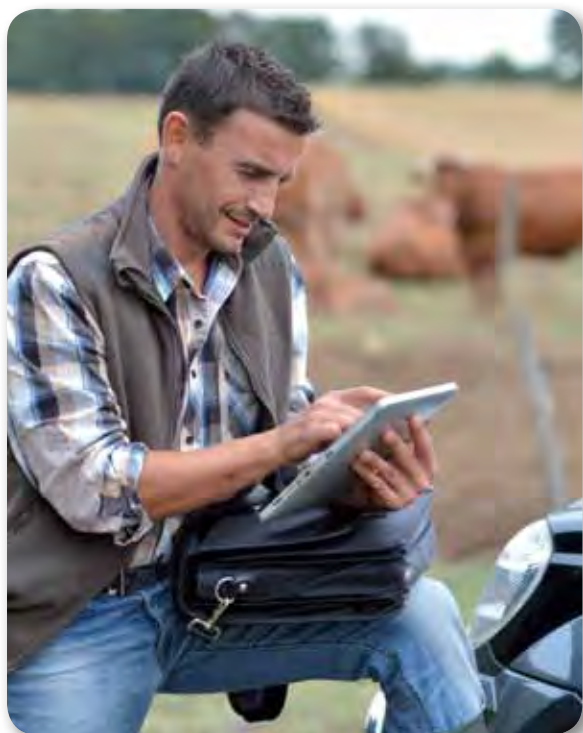
Copyright © FarmGuide Pty Ltd

Except as permitted by the Copyright Act 1968 (Cth), no part of this directory may be reproduced in any form without the prior written consent of the Copyright owner.

Copyright owners may take legal action against a person who infringes their direct copyright through unauthorised copying. Enquiries should be directed to the publisher.



# Contents



## Land & Water Management

Identification Chart - Weeds.....	15
Soil Results – a simple interpretation.....	23
Smart irrigation for your farm.....	24
What to look for when selecting your borehole pump.....	25



## Weather

Rainfall Chart .....	26
Rainfall Averages .....	28



## Internet Services

The future of farming will be Internet driven.....	29
--	----



## Welcome to FarmGuide

Welcome to FarmGuide Queensland .....	1
---------------------------------------	---



## Important Information

Agricultural Contacts .....	4
Agricultural Show & Field Days.....	11



## Farm Safety

DRSABCD action plan.....	30
Safety on your property.....	31
Working near overhead powerlines.....	33
What is LPG? .....	35
Safety First When Excavating - Dial Before You Dig.....	36
Spider Chart/Southcott?? .....	37
Flying Doctor issues new snakebite advice.....	38

**FarmGuide Pty. Ltd.** ABN 67 985 805 351

**Postal Address:** PO Box 326 Black Rock VIC 3193

**Phone:** (03) 9584 1666

**Email:** sales@farmguide.com.au [www.farmguide.com.au](http://www.farmguide.com.au)



Health & Wellbeing

Is gambling becoming an issue for you? .....39



Financial Services

Helping primary producers thrive across generations .....40



Insurance

Farm Signage .....41  
Protect your farm assets .....43



Livestock

Is it fit to load?.....44



Succession Planning

Farm Succession Planning .....45



Pest Animal Control

Firearm Safety .....47



Education & Training

Educating the next generation.....48

Stud Breeders Guide ..... 50

Classified Directory ..... ?





## Emergency Services

Emergency	000
Crimestoppers	1800 333 000
Lifeline	13 11 14
Poisons Information Centre	13 11 26

## Information Hotlines

Border Watch Hotline	1800 009 623
Bush Support Line	1800 805 391
CRIMFISH	1800 274 634
Emergency Animal Disease Watch Hotline	1800 675 888
Exotic Plant Pest Hotline	1800 084 881
FishWatch Hotline	1800 017 116
National Security Hotline	1800 123 400
SES Flood Storm Emergency	13 25 00

### Aerial Agricultural Association of Australia Ltd

[www.aerialag.com.au](http://www.aerialag.com.au)  
PO Box 353  
Mitchell ACT 2911  
T: 02 6241 2100

### AgForce



[www.agforceqld.org.au](http://www.agforceqld.org.au)  
Level 2, 110 Mary St  
Brisbane QLD 4000  
T: 07 3236 3100  
F: 07 3236 3077

### Agribusiness Association of Australia

[www.agribusiness.asn.au](http://www.agribusiness.asn.au)  
555 The Parade  
Magill SA 5072  
T: 08 8364 5062

### Almond Board of Australia

[www.australianalmonds.com.au](http://www.australianalmonds.com.au)  
PO Box 1507  
Loxton SA 5333  
T: 08 8584 7053

### Animal Health Australia

[www.animalhealthaustralia.com.au](http://www.animalhealthaustralia.com.au)  
PO Box 5116  
Braddon ACT 2612  
T: 02 6232 5522

### Animal Medicines Australia

[www.animalmedicinesaustralia.org.au](http://www.animalmedicinesaustralia.org.au)  
18 National Cct  
Barton ACT 2600  
T: 02 6257 9022

### Apple & Pear Australia Limited

[www.apal.org.au](http://www.apal.org.au)  
128 Jolimont Rd  
East Melbourne VIC 3002  
T: 03 9329 3511

### Aquaculture Association of Queensland

[www.aaq.com.au](http://www.aaq.com.au)  
MS 423  
Chinchilla QLD 4413  
T: 0407 797 149

### AUS-MEAT Limited

[www.ausmeat.com.au](http://www.ausmeat.com.au)  
PO Box 3403  
Tingalpa QLD 4173  
T: 1800 621 903

### Australian Banana Growers' Council

[www.abgc.org.au](http://www.abgc.org.au)  
PO Box 309  
Brisbane Market QLD 4106  
T: 07 3278 4786

### Australian Barramundi Farmer's Association

[www.abfa.org.au](http://www.abfa.org.au)  
PO Box 26  
Cooroy QLD 4563  
T: 0401 692 601

### Australian Beef Industry Foundation

[www.abif.com.au](http://www.abif.com.au)  
PO Box 2506  
Kew VIC 3101  
T: 0400 403 456

### Australian Bureau of Agricultural and Resource Economics and Sciences

[www.agriculture.gov.au/abares](http://www.agriculture.gov.au/abares)  
GPO Box 858  
Canberra ACT 2601  
T: 1800 900 090

### Australian Bureau of Statistics

[www.abs.gov.au](http://www.abs.gov.au)  
GPO Box 9817  
Brisbane QLD 4001  
T: 1300 135 070

### Australian Cane Farmers

[www.acfa.com.au](http://www.acfa.com.au)  
GPO Box 608  
Brisbane QLD 4001  
T: 07 3839 1900

### Australian Centre for International Agricultural Research

[www.aciar.gov.au](http://www.aciar.gov.au)  
GPO Box 1571  
Canberra ACT 2601  
T: 02 6217 0500

### Australian Certified Organic

[www.aco.net.au](http://www.aco.net.au)  
18 Eton St  
Nundah QLD 4012  
T: 07 3350 5706

### Australian Chamber of Commerce and Industry

[www.acci.asn.au](http://www.acci.asn.au)  
PO Box 6005  
Kingston ACT 2604  
T: 02 6270 8000

### Australian Chicken Growers' Council

[www.acgc.org.au](http://www.acgc.org.au)  
Lvl 6/183 North Quay  
Brisbane QLD 4003  
T: 07 3837 4747

### Australian Chicken Meat Federation

[www.chicken.org.au](http://www.chicken.org.au)  
PO Box 579  
North Sydney NSW 2059  
T: 02 9929 4077

### Australian Competition & Consumer Commission

[www.accc.gov.au](http://www.accc.gov.au)  
PO Box 12241  
Brisbane QLD 4003  
T: 07 3835 4666

### Australian Cotton Shippers Association

[www.austcottonshippers.com.au](http://www.austcottonshippers.com.au)  
PO Box 4  
Annerley QLD 4103  
T: 07 3848 3823

### Australian Council of Trade Unions

[www.actu.org.au](http://www.actu.org.au)  
Lvl 6/365 Queen St  
Melbourne VIC 3000  
T: 1300 362 223

### Australian Dairy Farmers

[www.australiandairyfarmers.com.au](http://www.australiandairyfarmers.com.au)  
Lvl 2/22 William St  
Melbourne VIC 3000  
T: 03 8621 4200

### Australian Dairy Herd Improvement Scheme

[www.adhis.com.au](http://www.adhis.com.au)  
Lvl 2/22 William St  
Melbourne VIC 3000  
T: 03 8621 4240

### Australian Dairy Products Federation

[www.adpf.org.au](http://www.adpf.org.au)  
Lvl 2/22 William St  
Melbourne VIC 3000  
T: 03 8621 4260



# 2019

## April

- 5 Wandoan Show (2 Days)  
[www.wandoanshow.com.au](http://www.wandoanshow.com.au)
- 6 Kilcoy Show (2 Days)  
[www.kilcoyshow.com.au](http://www.kilcoyshow.com.au)
- 12 Dalby Show (2 Days)  
[www.dalbydistrictshow.com](http://www.dalbydistrictshow.com)
- Nanango Show (2 Days)  
[www.nanangoshowsociety.com](http://www.nanangoshowsociety.com)
- 13 Gayndah Show
- 20 Marlborough Show  
[www.facebook.com/MarlboroughShowSociety](http://www.facebook.com/MarlboroughShowSociety)
- Mt Perry Show  
[www.facebook.com/MtPerryShowSociety](http://www.facebook.com/MtPerryShowSociety)
- 27 Dirranbandi Show  
[www.dirranbandishow.com.au](http://www.dirranbandishow.com.au)
- Goombungee-Haden Show  
[www.goombungeehadenshow.com](http://www.goombungeehadenshow.com)
- Tambo Show  
[www.facebook.com/tambostockshow](http://www.facebook.com/tambostockshow)
- The Caves Show  
[www.thecavesprogress.org.au](http://www.thecavesprogress.org.au)
- Monto Show (2 Days)

## May

- 3 Barcoo (Blackall) Show (2 Days)  
[www.facebook.com/blackallshowpage](http://www.facebook.com/blackallshowpage)
- Goondiwindi Show (2 Days)  
[www.goondiwindishow.com.au](http://www.goondiwindishow.com.au)
- Wallumbilla Show (2 Days)  
[www.wallumbillashow.com](http://www.wallumbillashow.com)
- 4 Rocklea Show
- South Burnett (Kingaroy) Show (2 Days)
- 5 Eidsvold Show
- St George Show
- 6 Taroom Show (2 Days)  
[www.taroomshow.com.au](http://www.taroomshow.com.au)
- 9 Roma Show (3 Days)  
[www.romashow.com](http://www.romashow.com)
- 10 Barcaldine Show (2 Days)
- Marburg Show (2 Days)
- Mundubbera Show (2 Days)
- 11 Baralaba Show
- Crows Nest Show  
[www.crowsnestshow.com.au](http://www.crowsnestshow.com.au)
- 13 Mitchell Show (2 Days)  
[www.facebook.com/MitchellShow](http://www.facebook.com/MitchellShow)

## May - Cont'd

- 16 Theodore Show (2 Days)  
[www.theodoreshow.com.au](http://www.theodoreshow.com.au)
- Charleville Show (3 Days)
- Gympie Show (3 Days)  
[www.gympieshow.com.au](http://www.gympieshow.com.au)
- 17 Callide Valley (Biloela) Show (2 Days)  
[www.callidevalleyshow.org.au](http://www.callidevalleyshow.org.au)
- Brookfield Show (3 Days)  
[www.brookfieldshow.com](http://www.brookfieldshow.com)
- Ipswich Show (3 Days)  
[www.ipswichshow.com.au](http://www.ipswichshow.com.au)
- 18 Blackbutt Show  
[www.blackbuttshow.com.au](http://www.blackbuttshow.com.au)
- Longreach Show  
[www.longreachannualshow.com.au](http://www.longreachannualshow.com.au)
- Biggenden Show (2 Days)  
[www.biggendenshow.com](http://www.biggendenshow.com)
- 19 Comet River Show
- 21 Miles Show  
[www.milesshow.com.au](http://www.milesshow.com.au)
- Alpha Show (2 Days)  
[www.facebook.com/AlphaShowSociety/](http://www.facebook.com/AlphaShowSociety/)
- 23 Fraser Coast (Maryborough) Show (2 Days)  
[www.frasercoastshow.com.au](http://www.frasercoastshow.com.au)
- 24 Capella Show (2 Days)  
[www.facebook.com/capellashowsociety/](http://www.facebook.com/capellashowsociety/)
- Chinchilla Show (2 Days)  
[www.chinchillashowsociety.com.au](http://www.chinchillashowsociety.com.au)
- Esk Show (2 Days)  
[www.eskshow.com.au](http://www.eskshow.com.au)



Promote your Business in FarmGuide today...



Online Search



Farming Information



Stud Breeders Guide



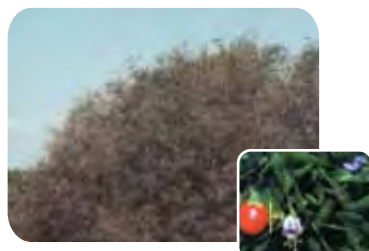
Classified Directory

**farmguide**  
.com.au





# Identification Chart - Weeds



**African Boxhorn**  
*Lycium ferocissimum*



**African Feather Grass**  
*Pennisetum macrourum*



**African Fountain Grass**  
*Pennisetum setaceum*



**African Love Grass**  
*Eragrostis curvula*



**African Tulip Tree**  
*Spathodea campanulata*



**Alligator Weed**  
*Alternanthera philoxeroides*



**Anchored Water Hyacinth**  
*Eichhornia crassipes*



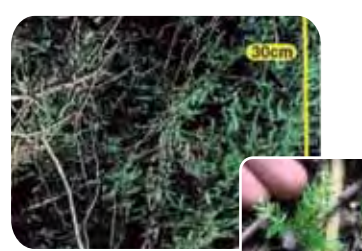
**Annual Ragweed**  
*Ambrosia artemisiifolia*



**Annual Thunbergia**  
*Thunbergia annua*



**Arrowhead**  
*Sagittaria montevidensis*



**Asparagus Fern**  
*Asparagus scandens*



**Athel Pine**  
*Tamarix aphylla*



Promote your Business in FarmGuide today....



Online Search



Farming Information



Stud Breeders Guide



Classified Directory

**farmguide**  
.com.au





# Smart irrigation for your farm



According to National Geographic, 80% of the world's fresh water is used for irrigation, and 60% of that water is wasted through evaporation, leaky channels and mismanagement. Therefore successful irrigation design is essential to know how much water should be applied to crops and how frequently.

The design of the system needs to effectively deal with soil and crop types, field size, shape and water supply, the system must be capable of delivering sufficient water during times of peak crop demand.

Planning an irrigation system for a new area requires some knowledge of soil types and the soil water reservoir. The soil is a reservoir of the water used by plants. Once it has been filled to capacity by irrigation or rainfall, the reservoir gradually becomes depleted by transpiration and evaporation, or evapotranspiration (ET). When the soil moisture reaches a predetermined minimum level (refill level), below this point the plant will wilt, irrigation should be applied in order to restore the soil moisture level to field capacity.

Irrigation scheduling is a system of working out when and how much water to apply to meet the quality and yield objectives. When to irrigate depends on the time it takes for the plant to use up the ready available water in the soil. How much irrigation to apply should not exceed the amount of water which is held in the wetted rootzone.

Scheduling can be based on soil moisture sensor's which is a very effective method to estimate when to irrigate. A second method of scheduling is based on an indirect measurement of plant water use from meteorological data, the irrigation run times used by the plant since the previous irrigation event, water use is calculated from either evaporation or evapotranspiration (ET).

Successful irrigation requires not only efficient design but also proper scheduling. The latter is dependent to a large degree on the ability of the farmer to carry out irrigation events properly. Nowadays there are many control systems available ranging from irrigation management and soil moisture systems to a manually controlled operation.

There are many types of irrigation systems available ranging from Centre Pivot, Lateral Move, Boom Irrigator, Hard and Soft hose irrigators, K Line, Bike Shift, Fixed Sprinklers, Conventional Drip, Sub Surface and Flood. Prior to making a decision to purchase and irrigation system there are many factors you should consider. This is dependent upon your goals, farm size, area under irrigation, current system, pasture type, soil type, past problems, evaporation peak, water license mega litres, water supply (Dam/Bore/River/Town), water quality and energy source.

An automated irrigation system is highly effective as it can deliver water when required and on time. Having a wireless solution means you have total control from your mobile phone or computer. You can ensure water use efficiency to reduce labour costs and improve the sustainability of your farm, vineyard or orchard.

At the end of the day, whatever system you choose for your project, it is important that you get a system designed and specified to perform and operate effectively.

*Article kindly provided by Wrightcom Australia.*



- Precise Measurement
- Intelligent Monitoring
- Enhanced Yield
- Optimised Irrigation
- Time Saving
- Cost Reduction



[sales@irrigatewisa.com.au](mailto:sales@irrigatewisa.com.au) | 1300 887 380 | [www.irrigatewisa.com.au](http://www.irrigatewisa.com.au)



# What to look for when selecting your borehole pump



When selecting a solar borehole pump many questions come to mind other than just, what's the price? The location of where a typical borehole pump is installed outlines a need to factor the quality, reliability, efficiency and installation flexibility as key decision drivers.

Saving a few dollars on an inferior quality product could result in many hundreds or even thousands of dollars spent lifting and re-fitting a complete pumping system when a cheaper or inferior model proves inadequate for long term use and reliability.

Selecting the right borehole pump can be a difficult and very confusing task, especially with so many options currently available. Typically speaking, the system design, component materials and the specific individual application must be considered when determining which durable and reliable system you need.

All Bore Hole systems consist of two primary components, the Wet End Pump and the Motor. Ensuring that the two halves operate in unison, providing a long and problem free life time. Some key points relating to these are outlined below:

**Wet End** – There have been many product improvements in recent times. There has been a switch from fixed impeller stacks to superior floating impeller stacks. These utilise wear rings and allow for easier starting in abrasive conditions, creating less wear and tear. The materials that the impeller and diffusers are comprised of must be a high quality, wear resistant material such as glass filled Noryl. With all of these key components housed in a stainless steel body you can be confident that your borehole wet end will cope with the harsh conditions that these units are required to work in. By finishing off your installation with a pre-fitted non-return valve on the discharge head you will prevent any potential water hammer and reverse flow through the pump itself.

**Motor** – The other half of the consideration is the choice of high quality motor. A key aspect of motor longevity is ensuring that the motor remains cool when operating, and a significant advancement with this has been through the use of encapsulated stators. The stators have been filled with resin, which helps to avoid any potential damage to the rotor or shaft during extended periods of use. Additional lubrication of the motor and thrust bearing system is provided through a water and glycol mixture housed within the unit itself. These key factors help to keep the motor in prime operating condition at all times. Another factor is a high efficiency motor to make the most from the available sunlight. The motor is a brushless DC permanent magnet type utilizing rare earth magnets for highly efficient performance and is supplied with a versatile multi-function controller.

When selecting your next Borehole pump, ask yourself... This pump could be installed at the bottom of a 50m hole. How often do I want to be pulling it out? Quality, durability and reliability are paramount!

*Article kindly provided by DAB Pumps - White International Pty Ltd.*



**DAB**  
WATER • TECHNOLOGY

**ITALIAN QUALITY &  
RELIABILITY FOR 40 YEARS**



# Rainfall Averages

Weather

Station	Jan	Feb	Mar	Apr	May	Jun	Jul	Aug	Sep	Oct	Nov	Dec	Ann
AMBERLEY AMO	116.9	121.2	85.5	54.5	52.8	46.9	37.6	28.6	33.3	73.3	81.5	119.4	864.0
ARCHERFIELD AIRPORT	137.3	152.3	126.9	78.2	72.9	66.9	46.9	36.8	35.2	77.9	99.4	124.7	1062.2
ATHERTON SHIRE COUNCIL	235.5	347.7	224.7	118.7	59.6	42.0	40.0	34.5	19.2	35.2	72.0	150.7	1369.3
BEAUDESERT	129.1	123.3	95.9	61.3	57.4	52.9	42.2	34.5	40.1	70.5	83.4	120.0	907.1
BOWEN AIRPORT	179.0	221.1	118.5	62.2	41.1	23.3	19.6	23.0	10.6	12.1	52.0	141.4	892.7
BRIGALOW RESEARCH STN	94.3	109.6	46.0	43.4	46.7	28.5	29.8	28.0	34.9	62.0	78.2	110.7	707.7
BUNDABERG AERO	174.2	157.8	113.4	55.9	67.5	50.7	39.1	34.0	35.6	76.7	85.7	127.6	1026.9
BURDEKIN SHIRE COUNCIL	253.2	257.8	177.5	58.6	35.3	29.4	18.2	14.4	18.9	23.7	44.3	111.6	1057.6
CAIRNS AERO	393.8	446.0	421.6	193.1	90.9	47.2	30.4	26.1	33.2	48.4	92.9	174.8	1987.8
CAMBOOYA POST OFFICE	97.3	80.5	68.7	42.2	40.6	40.9	38.4	31.2	36.5	64.3	76.5	100.6	721.2
CHARLEVILLE AERO	73.4	67.1	58.4	29.2	30.6	25.7	24.4	20.0	23.9	35.3	43.3	55.9	488.4
DALBY AIRPORT	76.1	80.0	57.4	19.1	36.7	31.2	22.7	22.8	29.4	58.4	71.0	94.1	603.0
EMERALD AIRPORT	85.5	87.2	57.4	29.1	19.0	31.4	17.1	21.3	27.2	41.6	54.4	88.8	561.2
GATTON QDPI RESEARCH STN	120.2	99.6	68.1	54.3	57.4	34.4	36.1	26.8	32.4	67.9	94.5	103.3	810.4
GOONDIWINDI AIRPORT	93.3	72.8	60.0	20.7	37.5	33.2	33.5	29.4	31.7	45.5	64.1	85.2	619.2
GYMPIE	163.0	168.2	144.6	82.9	71.6	60.2	51.6	40.0	45.0	70.9	87.9	137.0	1124.5
HORN ISLAND	399.0	449.2	354.5	233.4	67.7	15.3	9.0	5.7	5.2	14.1	41.0	180.3	1800.1
INJUNE POST OFFICE	87.7	89.2	62.9	40.0	32.1	30.3	29.1	25.2	26.6	48.1	72.9	90.4	635.7
ISISFORD POST OFFICE	69.4	72.6	59.2	35.5	27.9	21.3	20.5	12.0	15.3	26.7	35.5	53.6	447.6
KAIRI RESEARCH STATION	254.3	270.3	256.6	100.9	57.3	38.0	27.2	24.3	18.5	31.3	74.6	137.3	1290.0
LONGREACH AERO	77.3	77.1	54.4	34.3	24.4	18.8	18.6	10.9	11.7	22.5	29.2	54.5	439.8
MACKAY AERO	310.6	343.3	261.4	164.2	88.1	61.3	33.1	31.9	24.7	35.1	83.4	126.5	1558.9
MARYBOROUGH	163.9	173.2	157.2	86.5	78.0	66.8	51.3	41.0	42.2	75.7	84.5	127.9	1138.0
MOUNT ISA AERO	116.4	99.7	66.1	13.9	12.2	6.5	5.9	3.5	8.2	18.7	38.2	73.9	464.4
MT TAMBORINE FERN ST	221.9	221.5	194.0	128.8	120.7	98.1	81.0	55.2	56.8	91.9	120.7	162.9	1567.0
NANANGO WILLS ST	112.0	103.3	83.5	46.9	43.6	41.8	40.5	32.6	39.2	66.2	75.6	104.7	790.4
PROSERPINE AIRPORT	291.5	358.7	215.2	119.3	66.1	40.2	23.2	24.7	18.8	37.3	85.9	155.8	1429.2
ROMA AIRPORT	69.3	87.8	58.0	32.5	32.7	29.5	22.3	23.5	25.9	51.1	60.3	81.4	579.8
SANDY CAPE LIGHTHOUSE	163.6	167.7	157.4	120.8	118.4	108.4	87.9	62.2	50.3	63.5	70.5	98.9	1267.4
SOUTH JOHNSTONE EXP STN	525.5	570.5	611.7	388.3	266.8	156.1	111.6	87.5	83.9	98.3	147.2	260.8	3283.8
ST LAWRENCE POST OFFICE	206.2	198.5	133.8	59.7	47.3	48.8	31.4	23.7	26.2	44.4	71.3	124.7	1018.8
SURAT	71.4	74.5	58.9	30.6	33.7	36.6	37.8	27.4	29.1	49.3	54.4	71.9	577.1
TAMBO POST OFFICE	80.0	77.5	59.2	35.9	33.6	28.8	26.6	18.8	21.8	34.5	46.7	70.5	533.8
TEXAS POST OFFICE	89.3	75.2	56.6	34.3	39.1	40.8	41.3	33.8	39.8	61.0	67.5	80.8	660.3
TOOWOOMBA	132.1	121.1	94.6	61.9	58.4	56.8	52.0	39.5	46.7	72.2	89.5	120.0	952.4
TOWNSVILLE AERO	266.8	296.4	194.0	65.1	33.1	20.7	14.7	15.7	10.3	24.1	58.1	125.0	1127.9
URANDANGI	62.8	66.3	42.9	13.1	12.2	9.3	10.2	4.4	6.3	14.3	22.2	38.9	304.5
WARWICK	84.0	63.4	68.6	28.6	38.2	38.0	25.3	26.2	34.6	69.3	87.9	106.0	681.6
WINTON POST OFFICE	83.2	87.0	53.8	22.3	20.2	18.2	14.7	6.5	9.0	18.1	31.8	49.9	411.7
YEPPON THE ESPLANADE	122.7	184.3	131.5	70.9	70.0	54.8	42.9	32.2	34.9	50.6	69.1	111.2	995.5

Promote your Business in FarmGuide today....



Online Search



Farming Information



Stud Breeders Guide



Classified Directory







# DRSABCD Action Plan

In an emergency **call triple zero (000)** and ask for an ambulance

## D DANGER

Ensure the area is safe for your self, others and the patient



## R RESPONSE

**Check for response**—ask name—squeeze shoulders

**No response**

**Response**

Make comfortable

Monitor response



## S SEND for help

**Call triple zero (000) for an ambulance**  
or ask another person to make the call



## A AIRWAY

**Open mouth**—if foreign material present

Place in recovery position

Clear airway with fingers



## B BREATHING

**Check for breathing**—look, listen, feel

**Not normal breathing**

Start CPR

**Normal breathing**

Place in recovery position

Monitor breathing



## C CPR

**Start CPR—30 chest compressions : 2 breaths**

Continue CPR until help arrives  
or patient recovers

baby

child

adult



## D DEFIBRILLATION

**Apply defibrillator** if available  
and follow voice prompts



Learn First Aid with St John Ambulance Australia | **Free call 1300 360 455** | [www.stjohn.org.au](http://www.stjohn.org.au)

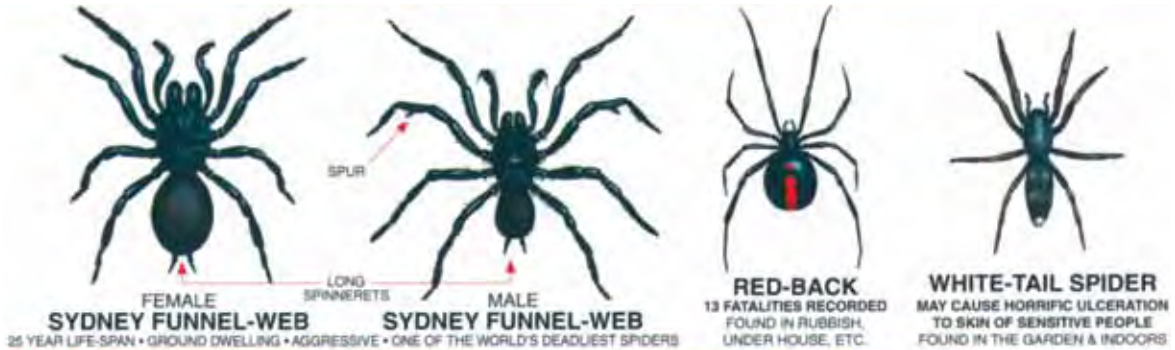
This information is not a substitute for training in first aid. © St John Ambulance Australia, January 2011





# Spider Chart

## DEADLY & DANGEROUS



**Notice:** Male spiders have a smaller abdomen, longer legs & swollen palps (for reproduction)

## TOXIC (POISONOUS) - PAINFUL BITE



**Warning:** Most of these spiders can be **dangerous** to people with allergies or hyper sensitivities

## THE "LOW RISK" SPIDERS



This information was kindly provided by Fumapest. Phone 1800 113 112 or go to [www.fumapest.com.au](http://www.fumapest.com.au)



QUEENSLAND 2018

STUD BREEDERS GUIDE

ALPACAS.....	50	CATTLE - BEEF - MAINE ANJOU .....	65	DEER.....	71
CATTLE - BEEF - ANGUS.....	50	CATTLE - BEEF - MINIATURE GALLOWAY ..	65	EMU.....	71
CATTLE - BEEF - AUSTRALIAN LOWLINE..	51	CATTLE - BEEF - MINIATURE HEREFORD ..	66	GOAT - ANGORA MOHAIR .....	72
CATTLE - BEEF - BAZADAIS .....	52	CATTLE - BEEF - MURRAY GREY.....	66	GOAT - BOER.....	72
CATTLE - BEEF - BAZADAISE .....	52	CATTLE - BEEF - NGUNI .....	66	GOAT - BRITISH ALPINE .....	72
CATTLE - BEEF - BEEF SHORTHORN .....	52	CATTLE - BEEF - PIEDMONTESE .....	66	GOAT - DAIRY .....	72
CATTLE - BEEF - BELGIAN BLUE.....	52	CATTLE - BEEF - RED ANGUS .....	66	HORSES.....	73
CATTLE - BEEF - BELMONT RED .....	52	CATTLE - BEEF - RED POLL.....	66	PIGS .....	73
CATTLE - BEEF - BELTED GALLOWAY ...	52	CATTLE - BEEF - ROMAGNOLA .....	66	SHEEP - BORDER LEICESTER.....	73
CATTLE - BEEF - BLONDE D'AQUITAINE..	53	CATTLE - BEEF - SALERS .....	66	SHEEP - DAMARA .....	73
CATTLE - BEEF - BONSMARA .....	53	CATTLE - BEEF - SANTA GERTRUDIS....	67	SHEEP - DORPER.....	73
CATTLE - BEEF - BRAFORD.....	53	CATTLE - BEEF - SENEPOL .....	68	SHEEP - DORSET DOWN .....	73
CATTLE - BEEF - BRAHMAN .....	54	CATTLE - BEEF - SHORTHORN.....	68	SHEEP - DORSET HORN.....	73
CATTLE - BEEF - BRAHMOUSIN.....	58	CATTLE - BEEF - SIMMENTAL .....	68	SHEEP - MERINO.....	73
CATTLE - BEEF - BRANGUS.....	58	CATTLE - BEEF - SOUTH DEVON .....	69	SHEEP - MERINO POLL .....	73
CATTLE - BEEF - BRITISH WHITE.....	59	CATTLE - BEEF - SPECKLE PARK .....	69	SHEEP - POLL DORSET .....	73
CATTLE - BEEF - CHARBRAY.....	59	CATTLE - BEEF - SQUARE MEATERS.....	69	SHEEP - POLWARTH .....	73
CATTLE - BEEF - CHAROLAIS .....	60	CATTLE - BEEF - WAGYU.....	69	SHEEP - ROMNEY .....	73
CATTLE - BEEF - DEVON .....	60	CATTLE - DAIRY - AUSSIE REDS .....	70	SHEEP - SOUTHDOWN.....	75
CATTLE - BEEF - DROUGHTMASTER .....	60	CATTLE - DAIRY - AYRSHIRE.....	70	SHEEP - SUFFOLK .....	75
CATTLE - BEEF - GALLOWAY.....	63	CATTLE - DAIRY - GUERNSEY .....	70	SHEEP - TEXEL .....	75
CATTLE - BEEF - GELBVIEH.....	63	CATTLE - DAIRY - ILLAWARRA .....	70	SHEEP - WHITE DORPER.....	75
CATTLE - BEEF - HEREFORD & POLL		CATTLE - DAIRY - JERSEY.....	71	SHEEP - WHITE SUFFOLK .....	75
HEREFORD.....	64	CATTLE - DUAL PURPOSE - DEXTER.....	71	SHEEP - WILTIPOLL.....	75
CATTLE - BEEF - HIGHLAND .....	65	CATTLE - DUAL PURPOSE - FLECKVIEH..	71	WORKING DOGS - KELPIE .....	75
CATTLE - BEEF - LIMOUSIN.....	65				





# STUD BREEDERS GUIDE

## Alpacas

### AUSTRALIAN ALPACA ASSOCIATION LTD



PO Box 1076  
Mitcham VIC 3132

Phone: (03) 9873 7700  
Email: info@alpaca.asn.au  
[www.alpaca.asn.au](http://www.alpaca.asn.au)

Eleebana	Runcom 22 Kolan St.....	3273 5793
Ellan Vannin	Watalgan 289 Watalgan Rd.....	4156 1861
Engle End	Maleny PO Box 1325.....	5499 9340
Erragolia	<a href="http://www.erragolia.com.au">www.erragolia.com.au</a>	
	Chambers Flat 181-201 Wendt Rd.....	5546 3971
Eukarya	Greenbank 96-100 Backwater Rd.....	3297 7919
Eureka	Dalveen 1 Mitchell Rd.....	0428 66 1114
Flame Trees	Spring Hill PO Box 243.....	5533 8714
Fragrant Valley	Redland Bay	
	499 German Church Rd.....	3206 7617
Geham Creek	Geham 199 Geham Rd.....	4126 2371
Gemini	Woodford 100 Crampton Dr.....	5496 1864
Glen Terah Alpacas	Dayboro 25 Gymkhana Pl.....	0432 33 8143
Golden Charm	Bargara PO Box 8228.....	4159 4624
Grandview	Nebo PO Box 46.....	4950 5855
Greenfire	Wheatlands via Wondai 356 Loop Rd.....	4163 9156
Gundare Lane	Morven Gundare.....	4654 5107
Hannamay Park	Nanango 86 Langan Rd.....	4163 3383
Harbak	<a href="http://www.harbakhorsehaven.com">www.harbakhorsehaven.com</a>	
	Bellbowrie PO Box 128.....	3202 5037
Headline	<a href="http://www.headlinealpacas.com.au">www.headlinealpacas.com.au</a>	
	East Greenmount 101 Lipp Rd.....	4697 1101
Ibyana	Jimboomba 9-13 Ibyana Ct.....	5546 9451
Inglis	Nudgee 17 Overlea St.....	3267 6266
Ivory Park	<a href="http://www.ivoryparksurris.com.au">www.ivoryparksurris.com.au</a>	
	Bungadoo 32 Klintoms Rd.....	4157 4684
Jacaranda Park Alpacas	<a href="http://www.jacarandaparkalpacas.com">www.jacarandaparkalpacas.com</a>	
	Childers PO Box 193.....	4126 2371
Jacobs	The Caves	
	133 Auton and Johnson Rd.....	4934 2881
Jarrabin	Karrabin Lot 2 Sherman Rd.....	3202 3113
Jarravale Alpacas	<a href="http://www.jarravalealpacas.com.au">www.jarravalealpacas.com.au</a>	
	Marian 73 Devereux Creek Rd.....	0437 34 8762
Jask	Lowood 27 Shannon Rd.....	5426 1723
Jatz Pacas	Thornlands 123A Boundary Rd.....	3206 0774
Joda Alpacas	Cawarral 66 Dodson La.....	4934 4308
Jukama Park	Rockhampton 158 Elphinstone St.....	4926 6385
Kent	Woodford 47-49 Fiddleworth Ct.....	5496 3371
Kerray Alpacas	Joskeleigh 102 Joskeleigh Rd.....	4934 4890
Kiambram	Mothar Mountain 22 Penny Rd.....	5482 9497
Kiwani	Booval PO Box 157.....	0421 09 3574
Kuriluca	Palm Beach 10 Diplacus Dr.....	5576 0780
Las Nubes	Beerwah PO Box 26.....	5439 9429
Leaholme Rise Alpacas	<a href="http://www.lralpacas.com.au">www.lralpacas.com.au</a>	
	Nankin via Rockhampton	
	125 Leaholme Rd.....	4935 4386
Lilly Pilly Lodge Alpacas	Burpengary 115 Facer Rd.....	3385 7125
Lynsey Park	Bell MS 360.....	4663 1285
McLaren	<a href="http://www.mclarenvalealpacas.com.au">www.mclarenvalealpacas.com.au</a>	
	Yatala PO Box 6104.....	5543 8988

Mistymountain	Tamborine 93 Dollarbird Dr.....	0411 11 8759
Moon Shine	Dayboro PO Box 73.....	3425 3395
Moons Farm	Brookfield 174 Moons La.....	3374 2337
Mysty Gums Alpacas	Nanango PO Box 229.....	4171 0469
Nattaginini Alpacas	<a href="http://www.nattagininiapacas.com.au">www.nattagininiapacas.com.au</a>	
	Maleny PO Box 611.....	5499 9590
Nerimbera Alpaca Stud & Transport	Nerimbera	
	74 Nerimbera School Rd.....	0417 12 7625
Paltarra	<a href="http://www.paltarrapark.com.au">www.paltarrapark.com.au</a>	
	Ocean View 2562 Mt Mee Rd.....	3425 3405
Parker	Upper Lockyer 99 Koreelah St.....	4630 5657
Pecan Lane	Palmwoods 36 Roys Rd.....	5457 3130
Pepperina	Forest Hill 4 McAllister Rd.....	5465 4232
Pfeiffer Park	<a href="http://www.ppapacas.com.au">www.ppapacas.com.au</a>	
	Hedlow 295 Artillery Rd.....	0409 12 9953
Red Ridge	Groomsville	
	1205 Pechey MacLagan Rd.....	4697 9533
Rosegum	<a href="http://www.rosegumalpacas.com.au">www.rosegumalpacas.com.au</a>	
	Springrose MS 75.....	4984 1686
Samakien	<a href="http://www.samakien.com.au">www.samakien.com.au</a>	
	Tanawha 762 Ilkley Rd.....	5445 9492
Satina-LoC Alpacas	<a href="http://www.santina-loc.com">www.santina-loc.com</a>	
	Nanango 33 Finlay Rd.....	4163 2315
Shady Pines Alpaca Stud	Wondai 270 Flats Rd.....	4168 4914
Shahrizai	Oakey 12001 Warrego Hwy.....	0401 07 1574
Sharalandan Park Alpacas	<a href="http://www.sharalandanpark.com.au">www.sharalandanpark.com.au</a>	
	Ironpot 874 Yeppoon Rd.....	4936 4886
Shikota	<a href="http://www.shikota.net.au">www.shikota.net.au</a>	
	Burpengary 81 Gleeson Rd.....	3888 5528
Silver D'arc Alpacas	Burpengary 57 Gleeson Rd.....	3888 7815
Silver Grove	Bundaberg PO Box 1408.....	4155 1098
Southland	Laravale via Beaudesert	
	409 Christmas Creek Rd.....	5544 2161
Spitfire	Yandina PO Box 384.....	5472 7061
Stannmore Park	Yatala 169 Pagan Rd.....	3807 2583
Stoney Hill	Emerald PO Box 214.....	4982 1061
Sue-Ray	Dundathu 113 Carter La.....	4123 2595
Sunline Alpacas	<a href="http://www.sunlinealpacas.com.au">www.sunlinealpacas.com.au</a>	
	Palmwoods 95 Jubilee Dr.....	5445 0882
Tal'ngai	The Summit PO Box 147.....	4683 2743
Taylor	Cedar Vale 95-105 Whitman Rd.....	5543 1631
The Lost Plot	Thornlands 155 Springacre Rd.....	3206 3460
Trolskog	Stanthorpe PO Box 145.....	4683 3283
Twiddleback	Waterford PO Box 355.....	5547 0190
Wahkuna Alpacas	Esk PO Box 284.....	5426 4477
White Cedar	Maleny PO Box 735.....	0438 50 8186
Whitsundayalpaca	Woodward 19 Pringle Rd.....	4946 7377
Xitlali Alpacas	Cootharaba	
	208 Kinnond Creek Rd.....	5485 3286
Yengarie Alpacas	Yengarie 65 Station Rd.....	4129 6531
ZamZook Park Alpacas	Bundaberg 52 Langbeckers Rd.....	4159 7005

## Cattle - Beef - Angus

### ANGUS AUSTRALIA



Locked Bag 11  
Armidale NSW 2350  
Phone: (02) 6772 3011  
Fax: (02) 6772 3095  
Email: office@angusaustralia.com.au  
[www.angusaustralia.com.au](http://www.angusaustralia.com.au)

Acacia	Killarney PO Box 163.....	4666 4026
Albert River	<a href="http://www.albertriverangus.com.au">www.albertriverangus.com.au</a>	
	Luscombe 161-167 Velvers Rd.....	0418 98 7368
Arizona	Meandarra Corack.....	4665 6106
Arthursleigh Q	Bunjurgen 502 Mt Alford Rd.....	5463 0498
Ascot Cattle Co	<a href="http://www.ascotcattle.com.au">www.ascotcattle.com.au</a>	
	Warwick "North Toolburra"	
	1123 Warwick-Allora Rd.....	0419 71 4652
Azimuth	East Greenmount	
	812 Greenmount-Hirstvale Rd.....	4697 2115
Backtrack	Mudgeeraba 151 Berrigans Rd.....	5525 3525
Bauhinia	Emerald 863 Rundle Access Rd.....	4982 2378
Benaroon	Blackbutt 469 Nukku North Rd.....	4163 0585
Black Thor	<a href="http://www.blackthorangus.com.au">www.blackthorangus.com.au</a>	
	Mt Alford via Boonah	
	64 Kooroomba Dr.....	3221 5900
Boonyouin	<a href="http://www.boonyouin.com">www.boonyouin.com</a>	
	Kingaroy	
	758 Flagstone Creek Rd.....	4164 5574
Boss	<a href="http://www.bossangus.com.au">www.bossangus.com.au</a>	
	Inglewood Uandi Rd.....	4659 9680
Bremervale	<a href="http://www.bremervale.com.au">www.bremervale.com.au</a>	
	Mt Walker 21 Christensen Rd.....	0408 81 9864
Broadwater	Warwick	
	1141 Upper Wheatvale Rd.....	4667 4612
Bulliac	Miles MS 48.....	4665 8115
Bunya Creek	Toowoomba 59A Mary St.....	4663 4700
Bushlands	Bungundarra 243 Mt Rae Rd.....	4939 8243
Cameron	Goondwindi Bieune.....	(02) 6946 4414
Canaga	Dulacca 1370 Dulacca-South Rd.....	4665 5207
Carabar	Meandarra Carabar.....	4665 6164
Carabeen	The Falls	
	1217 Spring Creek Rd.....	0412 64 4773
Carinya	Nebo 1375 Turrawalla Rd.....	4950 7177
Cherry	Warwick 599 Jensens Rd.....	4661 5973
Chrisbar	Pittsworth 577 Stoneleigh Rd.....	4693 7276
Clunes Crossing	Dalveen Sorrento Rd.....	4685 2300
Cochrane	<a href="http://www.cochraneangus.com.au">www.cochraneangus.com.au</a>	
	Jimboomba 575 Stockleigh Rd.....	5547 0158

# STUD BREEDERS GUIDE

## Sheep - Southdown

### SOUTHDOWN AUSTRALIA



Invermay VIC 3352

Phone: (03) 5338 7450

Mobile: 0422 184 920

Email: [lyntree@bigpond.com](mailto:lyntree@bigpond.com)

[www.southdownaustralia.com.au](http://www.southdownaustralia.com.au)

Barelli	
Mulgowie 7 Simpson Dr.....	5465 9186
Best of British	
Glenlyon 162 Walkers Rd.....	4685 6147
C E G	
Leyburn Macquarie Downs.....	0437 23 7682
Silverdale	
Inglewood PO Box 224.....	4652 1307
Wellan	
Burpengary 118 Cobb Rd.....	5498 6187

## Sheep - Suffolk

### SUFFOLK SHEEP SOCIETY OF AUSTRALIA



PO Box 120

Romsey VIC 3434

Phone: (03) 5429 3236

Mobile: 0412 021 596

Email: [secretary@suffolks.com.au](mailto:secretary@suffolks.com.au)

[www.suffolks.com.au](http://www.suffolks.com.au)

Barelli	
Mulgowie 7 Simpson Dr.....	5465 9186
Bulliac	
Miles Freemans Rd.....	4665 8115
Calvary	
Loganholme PO Box 4157.....	3287 6222
Corinda-Hi	
Corinda 46 Pratten St.....	3379 0224
Dakabin	
Dakabin 255-269 Marsden Rd.....	3491 5444
Emmanuel	
North Tamborine 26 Beacon Rd.....	5545 4545
Glenholme	
Gatton 33 Hickey St.....	0488 10 7778
Graceville Lodge	
Samsonvale Lot 3 Holscott Ct.....	3289 9231
Gumnut Ridge	
Milora	
770 Roadvale-Harrisville Rd.....	5463 5977
Milton Park	
Hendon 48 Gregory St.....	4666 2417
Myall	
Bowenville MS 232.....	4663 7755
Navaho	
Leyburn Macquarie Downs.....	0427 78 4313
Rochedale	
Rochedale Priestdale Rd.....	3340 0400

[www.farmguide.com.au](http://www.farmguide.com.au)

## Sheep - Texel

### AUSTRALIAN TEXEL STUD BREEDERS ASSOCIATION INC



PO Box 632  
Balwyn VIC 3103

Phone: (03) 9817 5511

Email: [secretary@texel.org.au](mailto:secretary@texel.org.au)

[www.texel.org.au](http://www.texel.org.au)

Condamine	
Warwick PO Box 67.....	4666 9222
Plainview	
Pittsworth 322 Leslie Bridge Rd.....	4693 5147
Scots	
Warwick 60 Oxenham St.....	4666 9802
Tarleeta	
Wellcamp 427 Drayton-Wellcamp Rd.....	0403 50 8531

## Sheep - White Dorper

### AUSTRALIAN DORPER & WHITE DORPER ASSOCIATION INC



PO Box 108

Goodwood SA 5034

Phone: (08) 8210 5229

Fax: (08) 8231 4173

Email: [dschaefer@adelaideshowground.com.au](mailto:dschaefer@adelaideshowground.com.au)

[www.australiandorper.com.au](http://www.australiandorper.com.au)

### DORPER SHEEP SOCIETY OF AUSTRALIA INC



C/- ABRI University of New England  
Armidale NSW 2351

Phone: (02) 6773 3805

Fax: (02) 6772 1943

Email: [dorper@abri.unel.edu.au](mailto:dorper@abri.unel.edu.au)

[www.dorper.com.au](http://www.dorper.com.au)

Alaryn White Dorper Stud	
Bundaberg PO Box 1156.....	0407 67 0477
Basecamp White Dorpers	
Kogan 2967 Tara-Kogan Rd.....	0429 89 1576
Bellevue Grazing Company	
<a href="http://www.bellevuedorpers.com.au">www.bellevuedorpers.com.au</a>	
Millmerran PO Box 65.....	4695 5125
Bottle Tree White Dorpers	
Haden 531 Bergen Rd.....	4698 8265
Darling Downs Dorpers	
<a href="http://www.darlingdownsdorpers.com.au">www.darlingdownsdorpers.com.au</a>	
Golden Beach PO Box 113.....	4652 4100
Davemm Hill White Dorpers	
Haden 531 Bergen Rd.....	4698 8265
Donnellis Dorper Stud	
Centenary Heights PO Box 11022.....	0407 95 7105
Glenochar	
Muckadilla Glenochar.....	4626 8312
Killara White Dorpers	
Toowoomba 289 E Drews Rd MS1497.....	4630 4489

## Sheep - White Dorper - Cont'd

Smit Dorpers	
Roma 2071 Begonia Rd.....	4626 5451
Timkaren	
Murgon 434 Ferris Rd.....	4168 2042
Whiteys White Dorpers	
Tara 1744 Tara-Kogan Rd.....	0497 80 7924

## Sheep - White Suffolk

### AUSTRALIAN WHITE SUFFOLK ASSOCIATION INC



PO Box 108

Goodwood SA 5034

Phone: (08) 8210 5231

Fax: (08) 8231 4173

Email: [whitesuffolk@gmail.com](mailto:whitesuffolk@gmail.com)

[www.whitesuffolk.com.au](http://www.whitesuffolk.com.au)

Milton Park	
Hendon 48 Gregory St.....	4666 2417
Oakleigh	
Thallon Omeo MS 13.....	4625 9672
Pride of the Downs	
Pittsworth 542 Linthorpe Rd.....	4693 2284

## Sheep - Wiltipoll

### AUSTRALIAN WILTIPOLL ASSOCIATION INC



**WILTIPOLL**  
THE LESS WORK PRIME LAMB BREED



PO Box 95

Bute SA 5560

Phone: 1300 879 611

Email: [members@wiltipoll.com](mailto:members@wiltipoll.com)

[www.wiltipoll.com](http://www.wiltipoll.com)

### WILTIPOLL STUD BREEDERS AUSTRALIA INC



1471 Loch-Wonthaggi Rd

Glen Alvie VIC 3979

Phone: 03 5678 3384

Email: [wsba1996@gmail.com](mailto:wsba1996@gmail.com)

[www.wiltipollbsa.com.au](http://www.wiltipollbsa.com.au)

Fairley	
North Ward 35 Yarrowonga Dr.....	4771 6062

## Sheep - Wiltipoll - Cont'd

Krienke	
Gowrie Junction 51 Krienke Rd.....	0407 17 1434
Stubbings	
Beenleigh PO Box 501.....	3804 0739

## Working Dogs - Kelpie

### THE WORKING KELPIE COUNCIL OF AUSTRALIA



PO Box 306

Castle Hill NSW 1765

Ph: (02) 9899 9224

Fax: (02) 9894 2140

Email: [admin@wkc.org.au](mailto:admin@wkc.org.au)

[www.wkc.org.au](http://www.wkc.org.au)

Bimini	
<a href="http://www.biminipark.com.au">www.biminipark.com.au</a>	
Malanda PO Box 18.....	4095 2260
Cagella Kelpie Stud	
Yangan Warreners Rd.....	4664 8032
Cairngorm Kelpie Stud	
Bungunya 1321 Lapgate Rd.....	4677 6147
Clan Kelpie Stud	
<a href="http://www.clankelpies.com.au">www.clankelpies.com.au</a>	
Southbrook 2347 Gore Hwy.....	4691 0280
Flagstone Kelpie Stud	
Lilydale	
542 Flagstone Creek Rd.....	4697 5215
Karmala Kelpie Stud	
<a href="http://www.karmala.com.au">www.karmala.com.au</a>	
Nobby Nobby Connection Rd.....	4696 3291
Terrorscreek Kelpie Stud	
Ocean View 102 Zillman Rd.....	3425 3359

**For Show & Field Dates**  
find details in the Information Pages





CLASSIFIED INDEX



**A**

<b>A</b>	<b>AGRICULTURAL &amp; RURAL SUPPLIES</b> .....100	See Also Augers Hay Making Equipment & Supplies Spray Equipment Supplies &/or Repairs Tractors - Machinery & Parts - Retail &/or Service Truck &/or Truck Equipment - New & Used - Sales, Repairs &/or Service	<b>AIR SEEDERS</b> See Agricultural Machinery - New, Used, Mfrs, Service &/or Parts
<b>ABATTOIR MACHINERY &amp; EQUIPMENT</b> .....81			<b>ALL TERRAIN VEHICLES (ATVS)</b> See Motor Bikes &/or ATVs - Retail, Repairs &/or Service
<b>ABATTOIRS</b> .....81			<b>ANALYSIS &amp;/OR TESTING - SOIL, PLANT &amp; WATER</b> .....105
<b>ABRASIVE BLASTING &amp;/OR EQUIPMENT</b> .....81			See Also Soil Investigation &/or Stabilisation Services
<b>ACCOMMODATION GUIDE</b> .....81			<b>ANIMAL NUTRITION</b> See Stock Feed & Supplements
<b>ACCOUNTANTS &amp; TAXATION CONSULTANTS</b> .....98			<b>AQUACULTURE</b> .....105
See Also Financial Planning &/or Investment Services			<b>ARTIFICIAL BREEDING SERVICES &amp;/OR SUPPLIES</b> .....105
<b>AERATION SYSTEMS</b> See Silo - Sales, Service &/or Repairs			See Also Livestock - Ultrasound, Scanning &/or Pregnancy Services
<b>AERIAL SPRAYING</b> See Agricultural Spraying &/or Services - Aerial			<b>ASBESTOS REMOVAL</b> .....105
<b>AGISTMENT</b> .....99			<b>AUCTIONEERS - LIVESTOCK</b> See Stock &/or Station Agents



# CLASSIFIED INDEX

**AUGERS** .....105  
 See Also Agricultural Machinery - New,  
 Used, Mfrs, Service &/or Parts

**AUTO ELECTRICAL SERVICES** .....105  
**AUTO PARTS RECYCLERS**  
 See Wreckers - Car, 4WD, Truck, Tractor  
 & Motor Bikes

**AUTOMOTIVE REPAIR & ENGINEERS**  
 See Motor Mechanics

**AXLES**  
 See Cars &/or 4WD Parts &/or Accessories

## B

**BAGS & SACKS** .....106  
**BALE HANDLING**

See Hay Making Equipment & Supplies

**BALERS**  
 See Hay Making Equipment & Supplies

**BANKS**  
 See Finance - Banks &/or Other Lending  
 Institutions

**BARRISTERS & SOLICITORS**  
 See Solicitors & Barristers

**BATTERIES - AUTOMOTIVE** .....106

**BEARINGS & BUSHINGS** .....107  
 See Also  
 Belting &/or Supplies  
 Chains, Chain Equipment &/or Sprockets

**BED & BREAKFAST**  
 See Accommodation

**BELTING &/OR SUPPLIES** .....107  
 See Also  
 Bearings & Bushings  
 Chains, Chain Equipment &/or Sprockets

**BOAT BUILDERS - REPAIRERS  
 &/OR SUPPLIERS** .....107

**BOATS &/OR YACHTS - RETAIL,  
 EQUIPMENT &/OR SUPPLIES** .....107

**BOLTS & NUTS** .....108

**BOOK KEEPING SERVICES**  
 See Accountants & Taxation Consultants

**BOON SPRAYERS**  
 See Spray Equipment Supplies &/or Repairs

**BORING & DRILLING  
 CONTRACTORS** .....108

**BORING & DRILLING EQUIPMENT  
 &/OR SUPPLIES** .....123  
 See Also  
 Agricultural Machinery - New, Used, Mfrs,  
 Service &/or Parts  
 Tillage  
 Tungsten & Carbide Wholesale &/or Supplies

**BRAKE & CLUTCH SERVICES** .....109

**BRUSHCUTTERS**  
 See Motor Mower & Outdoor Power  
 Equipment Retail, Repairs &/or Service

**BUILDING SOCIETIES**  
 See Finance - Banks &/or Other Lending  
 Institutions

**BRIDGE BUILDERS**  
 See Excavating &/or Earthmoving Contractors

**BRUSHCUTTERS**  
 See Motor Mower & Outdoor Power  
 Equipment Retail, Repairs &/or Service

**BUILDING SUPPLIES &  
 MATERIALS - NEW &  
 SECOND-HAND** .....109

See Also  
 Hardware & Handyman's Supplies - Retail  
 Timber &/or Timber Merchants

**BUILDINGS - PREFABRICATED  
 &/OR TRANSPORTABLE** .....109

See Also  
 Garage Builders &/or Prefabricators  
 Sheds, Shed Building &/or Supplies

**BULB FARMS**  
 See Nurseries - Indoor & Outdoor

**BULLBARS**  
 See Cars &/or 4WD Parts &/or Accessories

**BUS REPAIRS**  
 See Truck &/or Truck Equipment - New  
 & Used - Sales, Repairs &/or Service

**BUSHINGS &/OR BEARINGS**  
 See Bearings & Bushings

**BUSINESS COURSES**  
 See Education & Training Providers

## C

**CALF FEED**  
 See Stock Feed & Supplements

**CAMPER TRAILERS**  
 See Caravans &/or Camper Trailers -  
 Equipment &/or Supplies

**CAMPING EQUIPMENT &/OR  
 SUPPLIES** .....110

See Also  
 Caravans &/or Camper Trailers - Equipment  
 &/or Supplies

**CAR HOISTS**  
 See Cars &/or 4WD Parts &/or Accessories

**CARAVAN PARKS**  
 See Accommodation

**CARAVANS &/OR CAMPER  
 TRAILERS - EQUIPMENT  
 &/OR SUPPLIES** .....110

See Also  
 Camping Equipment &/or Supplies  
 Trailers - Sales, Hire, Manufacturers &/or  
 Equipment

**CARRIERS - GENERAL** .....111

See Also  
 Transport & Freight Services - International  
 &/or Domestic

**CARRIERS - GRAIN** .....111

See Also  
 Transport & Freight Services - International  
 &/or Domestic

**CARRIERS - LIVESTOCK** .....111

See Also  
 Transport & Freight Services - International  
 &/or Domestic

**CARS &/OR 4WD -  
 NEW &/OR USED** .....112

**CARS &/OR 4WD PARTS  
 &/OR ACCESSORIES** .....116

See Also  
 Batteries - Automotive  
 Muffler &/or Exhaust Systems - Car, Truck,  
 Tractor  
 Tyres &/or Retreading - Car, Truck & Tractor

**CARTAGE WATER**  
 See Water Suppliers &/or Cartage - Drinking  
 &/or Other

**CASTORS & WHEELS -  
 INDUSTRIAL & GENERAL** .....117

**CATTLE FEEDERS**  
 See Livestock Feeding Equipment

**CATTLE FEEDS & SUPPLIES**  
 See Livestock Supplies

**CATTLE HANDLING EQUIPMENT**  
 See Livestock Handling Equipment

**CATTLE RUGS**  
 See Livestock Supplies

**CATTLE SCALES**  
 See Scales & Weighbridges

**CEMENT SUPPLIES**  
 See Concrete Products &/or Services

**CHAINS, CHAIN EQUIPMENT  
 &/OR SPROCKETS** .....117

**CHAINSAWS & SAWS -  
 EQUIPMENT & SUPPLIES** .....117

See Also  
 Motor Mower & Outdoor Power Equipment  
 Retail, Repairs &/or Service

**CHEMICAL FEED & ORGANIC PRODUCE**  
 See Produce Merchants & Manufacturers

**CHEMICALS - AGRICULTURAL** ....118

**CLEANING EQUIPMENT &/OR  
 SUPPLIES** .....118

**CLOTHING - PROTECTIVE**  
 See Safety Equipment &/or Accessories

**COLLEGES**  
 See Education & Training Providers

**CONCRETE - READY-MIXED** .....118  
 See Also  
 Concrete Products &/or Services

**CONCRETE PRODUCTS &/OR  
 SERVICES** .....118

See Also  
 Concrete - Ready-mixed

**CONCRETE TANKS**  
 See Tanks - Sales Services &/or Repairs

**CONSULTANTS**  
 See Agricultural Consultants

**CONTRACTORS**  
 See Agricultural Contractors

**CONVEYOR BELTS**  
 See Belting &/or Supplies

**COULTERS**  
 See Agricultural Machinery - New, Used,  
 Mfrs, Service &/or Parts

**CRANE & TRAVEL TOWERS**  
 See Hire - Equipment, Machinery & Tools

**CROP DUSTING**  
 See Agricultural Spraying &/or Services -  
 Aerial

**CULTIVATORS**  
 See Agricultural Machinery - New, Used,  
 Mfrs, Service &/or Parts

**CUSTOM FEEDS**  
 See Livestock Supplies

## D

**DAIRY CHEMICALS**  
 See Chemicals - Agricultural

**DAIRY EQUIPMENT SUPPLIES  
 &/OR SERVICES** .....118

See Also  
 Refrigeration Equipment - Sales, Services  
 &/or Repairs

**DENTISTS** .....118

**DENTISTS - SPECIALISTS GUIDE  
 - ORTHODONTISTS** .....119

**DIESEL - ENGINEERS**  
 See Engineers - Diesel

**DIESEL ENGINES**  
 See Engines - Diesel

**DIESEL FUEL INJECTION** .....119

See Also  
 Engines - Diesel  
 Turbochargers

**DISABILITY & INVALID SUPPLIES,  
 SUPPORT &/OR SERVICES** .....119

**DISCS**  
 See Agricultural Machinery - New, Used,  
 Mfrs, Service &/or Parts

**DISPOSAL STORES**  
 See Camping Equipment &/or Supplies

**DOG TRAINING EQUIPMENT  
 &/OR SUPPLIES** .....119

**DRENCHES, DIPS, EQUIPMENT &/OR  
 SUPPLIES**  
 See Livestock Supplies

**DRINKING WATER**  
 See Water Suppliers &/or Cartage - Drinking  
 &/or Other

## E

**EDUCATION & TRAINING  
 PROVIDERS** .....119

**EDUCATION - CORRESPONDENCE**  
 See Education & Training Providers

**ELECTRIC FENCES - SUPPLIES &/OR  
 SERVICE**  
 See Fencing Supplies &/or Gates Inc. Electric

**ELECTRIC MOTORS - RETAIL  
 &/OR SERVICE** .....120

**ELECTRIC TOOLS**  
 See Tools &/or Toolboxes

**ELECTRICITY RETAILERS,  
 DISTRIBUTORS &/OR  
 REGULATORS** .....120

**ENGINE RECONDITIONING &  
 ENGINE PROTECTION** .....120

See Also  
 Engines - Diesel  
 Engines - Petrol

**ENGINEERS - CONSULTING** .....120

**ENGINEERS - DIESEL** .....121

**ENGINEERS - GENERAL** .....121

**ENGINEERS - GEOTECHNICAL**  
 See Analysis &/or Testing - Soil, Plant & Water

**ENGINEERS - MANUFACTURING** ...122

## Abattoir Machinery & Equipment

Kentmaster Equipment (Aust) Pty Ltd  
Hillcrest U2/24 Central Ct.....3806 8400  
Mitchell Engineering Food Equipment  
[www.mefe.com.au](http://www.mefe.com.au)  
Scarborough 24 Fernlea Ave.....3885 8930

## Show & Field Dates

Find details in the Information Pages

## Abattoirs



### Thomas Borthwick & Sons

Central Queensland, Mackay  
Export and Domestic Processing Plant  
Processing Most Types of Cattle

#### Contacts:

#### Livestock Manager

Malcolm Kinman - 0427 521 377

#### Livestock Buyers:

Kerry Flynn - 0448 528 826  
Scott Sheahan - 0488 747 979  
Peter Wigginton - 0438 331 670



Abattoirs Ladbrooks Slaughterhouse  
Roma Raglan St.....4622 1183  
Barcoo Butchery  
Blackall 47 Shamrock St.....4657 4684  
Carey Bros Abattoir  
[www.careybros.com.au](http://www.careybros.com.au)  
Yangan.....4664 8307  
Churchill Abattoir  
Churchill Berry St.....3812 9000  
Highchester Meats Pty Ltd  
Glennagle  
6604 Mt Lindesay Hwy.....5543 1350  
Kuttatubul Processing Abattoir Plant  
Kuttatubul 62 Geebunga Rd.....4954 0131  
Oakley Abattoir Pty Ltd  
[www.nmpa.com.au](http://www.nmpa.com.au)  
Oakley Connection Rd.....4692 0000  
Rocky Creek Abattoir  
Tolga Mapee Rd.....4095 4358  
**THOMAS BORTHWICK & SONS**  
See Our Display Advt This Classification  
[www.nh-foods.com.au](http://www.nh-foods.com.au)  
Bakers Creek 113 Main St.....4952 8888

## Education Advice?

Find details in the Information Pages

## Abrasive Blasting &/or Equipment - Cont'd

CQ Powdercoaters & Sandblasting  
[www.cqpowdercoaters.com.au](http://www.cqpowdercoaters.com.au)  
North Rockhampton 72 Quinn St.....4922 3600  
Dana-Ridge  
[www.dana-ridge.com.au](http://www.dana-ridge.com.au)  
Pinkenba 12/67 Bancroft Rd.....3860 4913  
Diamond Protective Coating Services Pty Ltd  
[www.diamondpcs.com.au](http://www.diamondpcs.com.au)  
Glenella 16 Fursden St.....4942 1149  
DJ Sandblasters  
Acacia Ridge 11 Activity St.....3345 3020  
Emerald Abrasive Blasting  
Emerald Cam St.....4982 4475  
Gold Coast Sandblasting Pty Ltd  
Ernest 24 Barnett Pl.....5574 4610  
Hendle Sandblasting  
Mareeba Lot 12 Chewko Rd.....4092 5577  
Honor Sandblasting Services  
Alloway 131 Honors Rd.....4159 7777  
Lightning Fast Sandblast & Protective Coatings  
Warwick Hamilton St.....0423 46 3565  
MacKay Abrasive Blasting  
Paget Lot 12 Interlink Ct.....4998 5566  
Maryborough Slipway & Sandblasting  
Granville 4 Dundas St.....4121 5516  
May Malcolm Sandblasting  
Tolga Quilter Cres.....4095 4550  
Nikenbah Sandblasting  
Nikenbah 44 Pigford La.....4128 3533  
P & J Powder Coatings Pty Ltd  
[www.powdercoating.com.au](http://www.powdercoating.com.au)  
Tingalpa 39 Container St.....3890 1797  
Peerless Sandblasting  
Salisbury 32 Pentex St.....3875 2775  
Queensland Complete Sandblasting Service  
Cooloom Beach 13 Junction Dr.....5351 1811  
Queensland Mobile Abrasive Blasting Pty Ltd  
Carole Park 27 Antimony St.....3271 1600  
Rocklea Abrasive Blasting Pty Ltd  
Rocklea  
Breadwell St (Cnr Franklin St).....3277 8430  
Sarina Abrasive Blasting  
Sarina 75 Eversleigh Rd.....4956 2112  
SatinTouch  
[www.satintouch.com.au](http://www.satintouch.com.au)  
Carole Park 64 Mica St.....3271 2473  
Dalby Warrego Hwy.....4662 5811  
Mt Isa 72 Old Mica Creek Rd.....4749 3299  
Suncoast Sandblasting  
Kureelpa 2 Kureelpa Falls Rd.....0427 06 1273  
Sunderland Abrasive Blasting  
Innisfail 96 Frith Rd.....4061 3445  
Toowoomba Sandblasting  
Toowoomba 23 Molloy St.....4659 2560  
Tropical Coast Sandblasting  
Silkwood Bruce Hwy.....4065 2253  
VT Industrial Coatings  
[www.vtindustrialcoatings.com.au](http://www.vtindustrialcoatings.com.au)  
Toowoomba 23 Molloy St.....4659 2500  
Waters Abrasive Blasting & Service  
[www.abrasiveblastingtownsville.com.au](http://www.abrasiveblastingtownsville.com.au)  
Bohle 131 Shaws Rd.....4774 8123

## ACCOMMODATION GUIDE

201 Lake Street  
[www.201lakestreet.com.au](http://www.201lakestreet.com.au)  
Cairns 201 Lake St.....4053 0100  
21 on Hursley Motel Apartments  
[www.21onhursley.com.au](http://www.21onhursley.com.au)  
Toowoomba 21 Hursley Rd.....4633 4450  
2nd Avenue Beachside Apartments  
[www.2ndavenue.com.au](http://www.2ndavenue.com.au)  
Burleigh Heads 3 Second Ave.....5576 1033  
53 On Victoria  
[www.53onvictoria.com.au](http://www.53onvictoria.com.au)  
Warwick 53 Victoria St.....0447 61 3488  
A & A Lodge Motel Emerald  
[www.aandamotel.com.au](http://www.aandamotel.com.au)  
Emerald 109 Clermont St.....4982 2355  
A Country View Motel  
[www.ilbilbiemotel.com.au](http://www.ilbilbiemotel.com.au)  
Ilbilbie 20 Greenhill Rd.....4950 1169  
A Raceview Motor Inn  
[www.raceviewmotorinn.com](http://www.raceviewmotorinn.com)  
Toowoomba 52 Hursley Rd.....4634 6777  
A Villa Gail Bed & Breakfast  
[www.avillagail.com](http://www.avillagail.com)  
Yorkeys Knob 36 Janet St.....4055 8178  
A&A Motel Proserpine  
[www.aandamotelproserpine.com.au](http://www.aandamotelproserpine.com.au)  
Proserpine 156 Main St.....4945 1888  
A'Montego Mermaid Beach Motel  
[www.mermaidbeachmotel.com.au](http://www.mermaidbeachmotel.com.au)  
Mermaid Beach  
2395 Gold Coast Hwy.....5575 1577  
A1 Inn the City  
Cairns 141 Lake St.....4031 1326  
Abacus Motel  
Mt Isa 163 Barkly Hwy.....4743 1500  
Abajaz Motor Inn  
[www.abajazmotorinn.com.au](http://www.abajazmotorinn.com.au)  
Longreach 11 Wonga St.....4658 1288  
Abbey on Roma  
[www.abbeyonroma.com.au](http://www.abbeyonroma.com.au)  
Brisbane 160 Roma St.....3236 0600  
Abode37 Motel  
[www.abode37.com.au](http://www.abode37.com.au)  
Emerald 37 Roberts St.....4987 6519  
Absolute Oceanfront Tourist Park  
[www.oceanfrontpark.com.au](http://www.oceanfrontpark.com.au)  
Bargara  
117 Woongarra Scenic Dr.....4159 2436  
Acacia Court Hotel  
[www.acaciacourt.com](http://www.acaciacourt.com)  
Cairns 223-227 Esplanade.....4051 5011  
Acacia Inner City Inn  
[www.acaciainn.com](http://www.acaciainn.com)  
Brisbane 413 Upper Edward St.....3832 1663  
Acacia Motel  
[www.acaciamotel.com](http://www.acaciamotel.com)  
Chinchilla 96 Glasson St.....4662 7379  
Acacia Motor Inn  
[www.acaciamotorinn.com.au](http://www.acaciamotorinn.com.au)  
Bundaberg 248 Bourbong St.....4152 3411  
Ace Caravan Park  
Tin Can Bay 32 Esplanade.....5486 4152  
Active Holidays BIG4 Noosa  
[www.big4noosa.com.au](http://www.big4noosa.com.au)  
Tewantin 141 Cooroy Noosa Rd.....5447 1712  
Adels Grove Camping Park  
[www.adelsgrove.com.au](http://www.adelsgrove.com.au)  
Lawn Hill Riversleigh Rd.....4748 5502  
Adobe Motel  
[www.adobemotel.com.au](http://www.adobemotel.com.au)  
Cairns 191 Sheridan St.....4051 5511  
Advancetown Caravan Park  
Advancetown  
376 Nerang Murwillumbah Rd.....5533 2147  
Advancetown Hotel-Motel  
[www.advancetown.com](http://www.advancetown.com)  
Advancetown  
402 Nerang-Murwillumbah Rd.....5533 2222  
Adventurers Backpackers Resort  
[www.adventurersresort.com](http://www.adventurersresort.com)  
South Townsville  
79 Palmer St.....4721 1522  
Aegean Apartments  
[www.aegeanmooloolaba.com.au](http://www.aegeanmooloolaba.com.au)  
Mooloolaba 14 River Esp.....5444 1255  
Aegean Apartments  
[www.aegeanapartments.com.au](http://www.aegeanapartments.com.au)  
Surfers Paradise 30 Laycock St.....5570 2388  
Affordable Gold City Motel  
[www.goldcitymotel.com.au](http://www.goldcitymotel.com.au)  
Charters Towers  
28 Dalrymple Rd (Lynd Hwy).....4787 2187  
Agnes Palms Beachside Apartments  
[www.agnespalms.com.au](http://www.agnespalms.com.au)  
Agnes Water  
12 Captain Cook Dr.....4974 7200  
Agnes Water Beach Caravan Park  
[www.agneswaterbeach.com.au](http://www.agneswaterbeach.com.au)  
Agnes Water Jeffrey Ct.....4974 7279  
Agnes Water Retreat  
Agnes Water  
2276 Roundhill Rd.....4974 9270

## ACCOMMODATION GUIDE



- Ground Floor Accommodation
- Under Cover Parking
- Foxtel TV
- Wireless Internet
- Licenced Restaurant
- Quiet Location

41 Margaret St Toowoomba

Book online

[www.appleguminn.com.au](http://www.appleguminn.com.au)  
or call 4632 2088

1770 Camping Ground  
[www.1770campingground.com.au](http://www.1770campingground.com.au)  
Agnes Waters  
641 Captain Cook Dr.....4974 9286  
181 The Esplanade  
[www.181.com.au](http://www.181.com.au)  
Cairns 181 The Esplanade.....4052 6888  
19th Avenue on the Beach  
[www.19havenuepalmbeach.com.au](http://www.19havenuepalmbeach.com.au)  
Palm Beach 2 Nineteenth Ave.....5576 3844



# Notes & Quotes

Lined area for notes and quotes, consisting of 20 horizontal lines.



# THE POWER TO PERFORM WITH UP TO 682 HORSEPOWER



## TRUE BLUE



**NEW HOLLAND**

AGRICULTURE

The GENESIS T8 Series and T9 4WD Series tractors are built to out perform the competition. The GENESIS T8 Series are the most powerful conventional tractors in the world. While the T9 4WD Series have the largest and quietest cabs in the industry for your comfort. And with ultra efficient engines you'll enjoy lower operating costs. So if you want to make a big difference to your farming operation, it's time for a big tractor.

**For a fair go visit your local New Holland dealer today.**



Prostate Cancer  
Foundation of Australia  
Major Partner

[newholland.com](http://newholland.com)

**CNH**  
INDUSTRIAL

CAPITAL